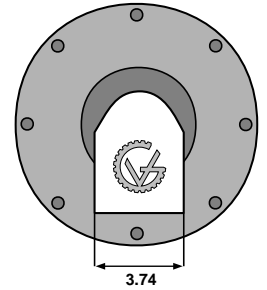
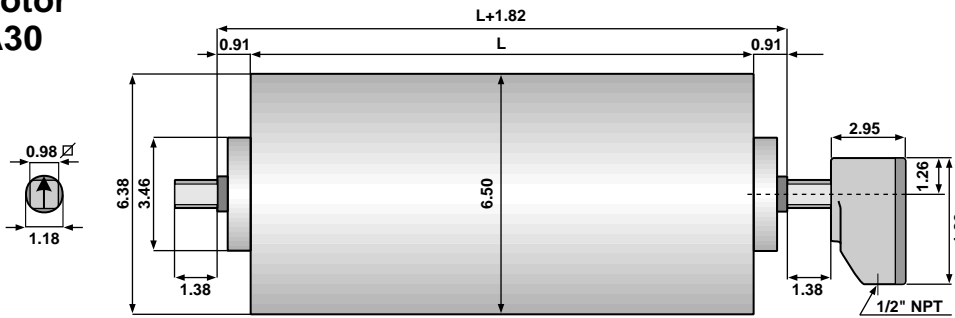
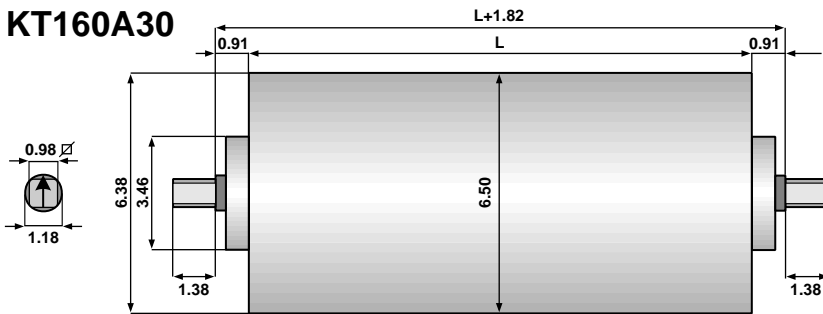


Type 160 Dimensions (in inches)

Drum Motor TM160A30



Idler KT160A30

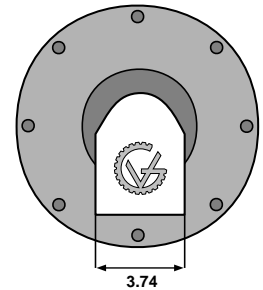
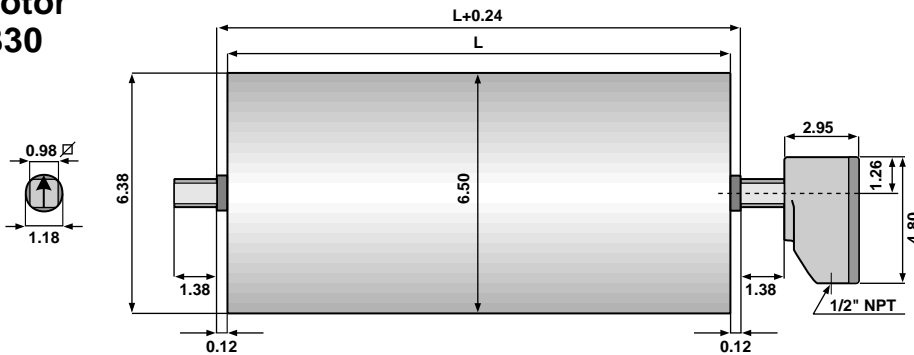


Standard face widths (L) in inches for the TM160A30 and KT160A30:

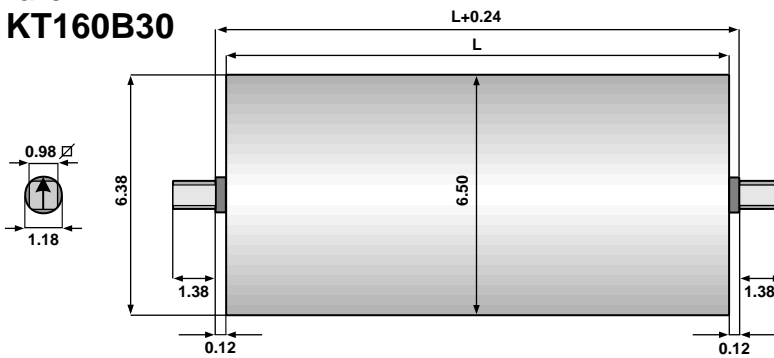
13.78* 15.75 16.73 17.72 19.69 21.65 23.62
25.59 27.56 29.53 31.50 33.46 35.43 37.40

*This face width is not available in all horsepower.

Drum Motor TM160B30



Idler KT160B30

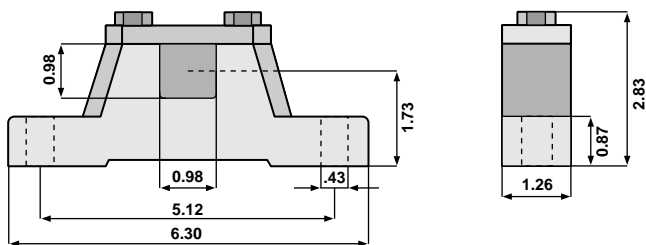


Standard face widths (L) in inches for the TM160B30 and KT160B30:

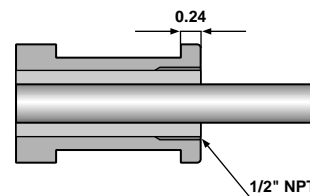
15.75* 16.73* 17.72 19.69 21.65 23.62
25.59 27.56 29.53 31.50 33.46 35.43 37.40

*This face width is not available in all horsepower.

Bracket AB 30



Optional Cable Type



Note: When Optional Cable Type is selected, the minimum face width (L) increases by 1.969 inches.