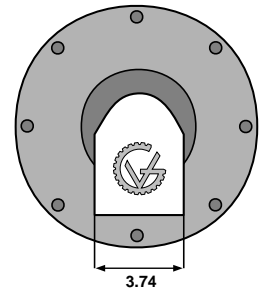
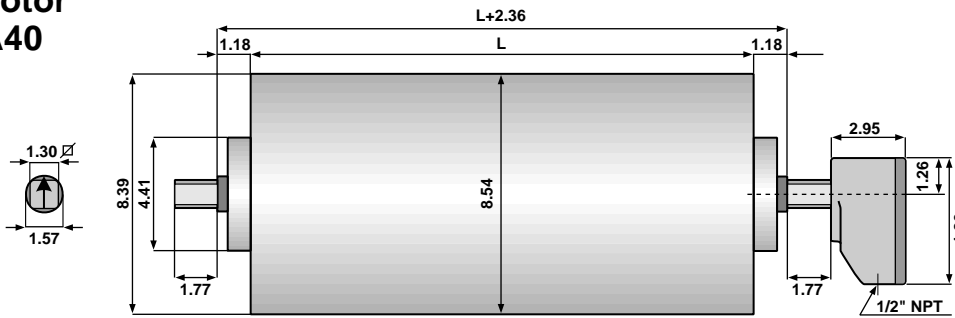
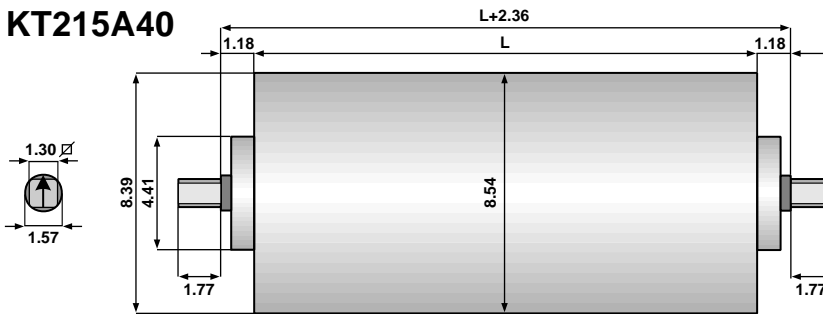


Type 215 Dimensions (in inches)

Drum Motor TM215A40



Idler KT215A40

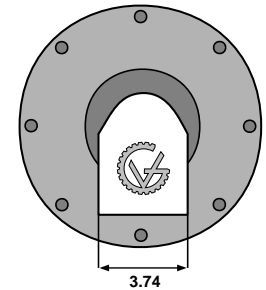
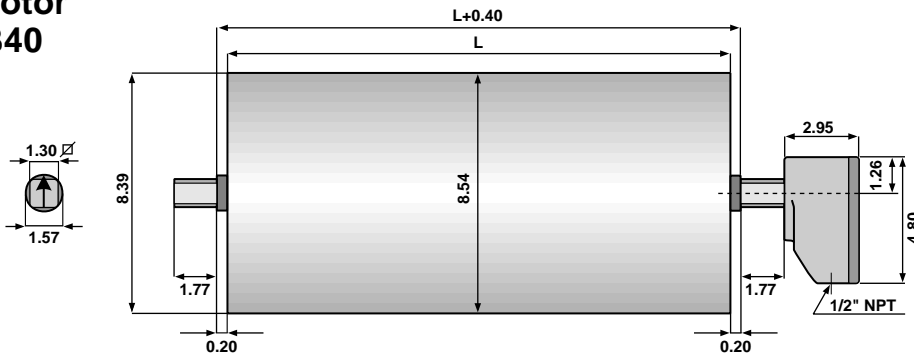


Standard face widths (L) in inches for the
TM215A40 and KT215A40:

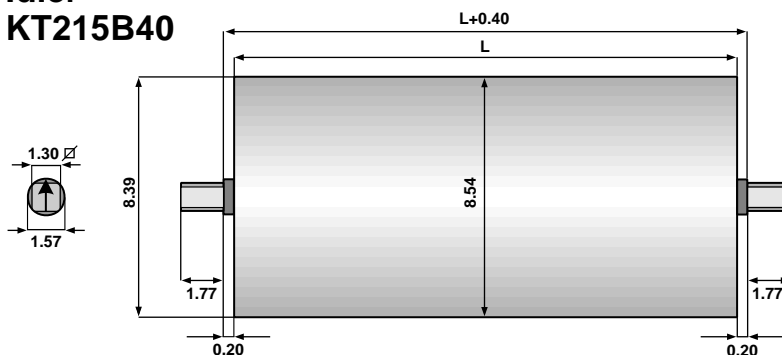
16.73* 17.72* 19.69 21.65 23.62 25.59
27.56 29.53 31.50 33.46 35.43 37.40 39.38

*This face width is not available in all horsepower.

Drum Motor TM215B40



Idler KT215B40

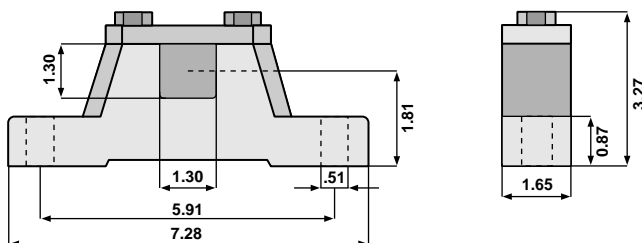


Standard face widths (L) in inches for the
TM215B40 and KT215B40:

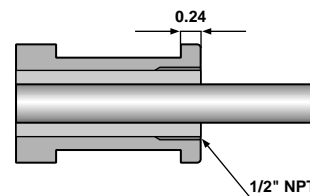
19.69* 21.65 23.62 25.59 27.56
29.53 31.50 33.46 35.43 37.40 39.38

*This face width is not available in all horsepower.

Bracket AB 40



Optional Cable Type



Note: When Optional Cable Type is selected,
the minimum face width (L) increases by 1.969 inches.