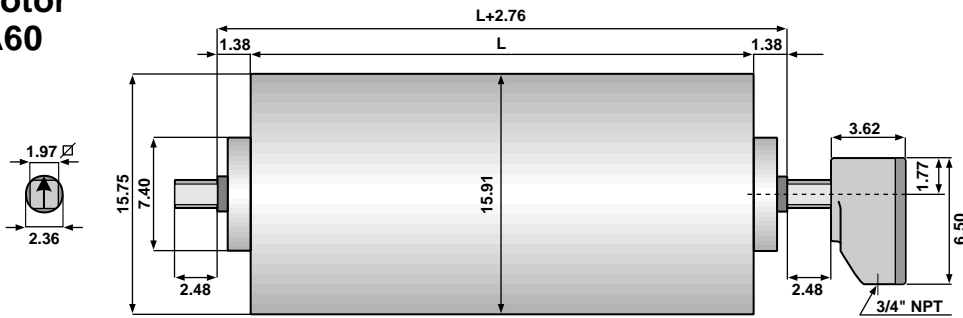
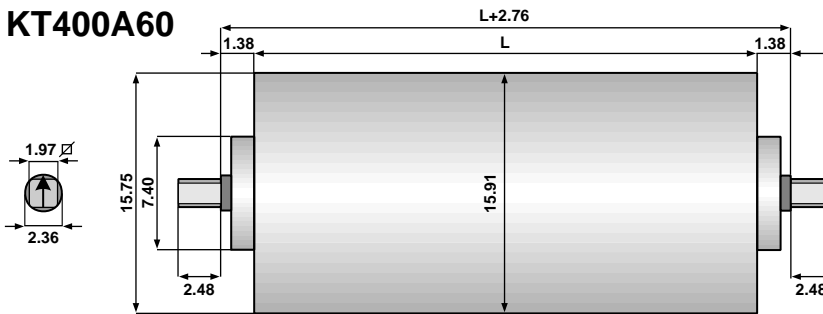


Type 400 Dimensions (in inches)

Drum Motor TM400A60



Idler KT400A60

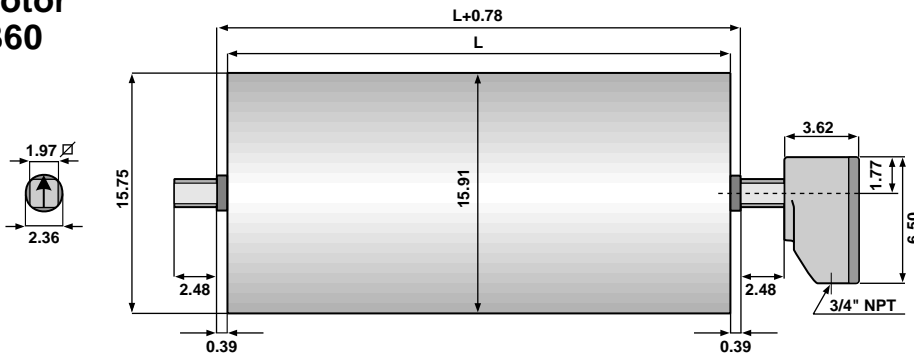


Standard face widths (L) in inches for the
TM400A60 and KT400A60:

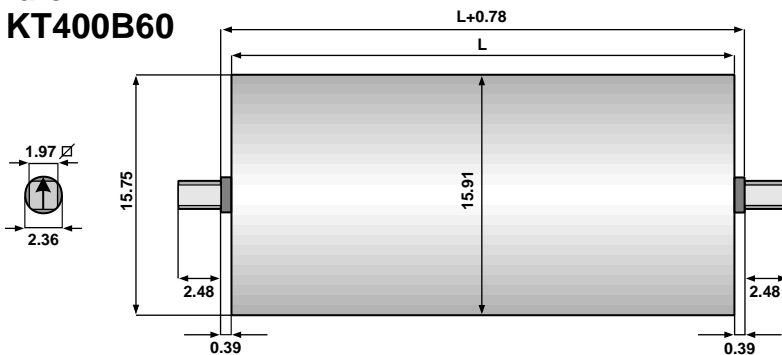
23.62* 25.59* 27.56 29.53 31.50 33.46
35.43 37.40 39.38 41.34 43.31 45.28

*This face width is not available in all horsepower.

Drum Motor TM400B60



Idler KT400B60

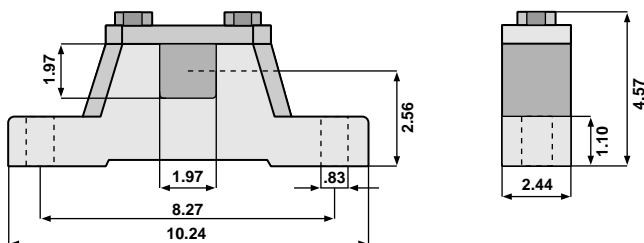


Standard face widths (L) in inches for the
TM400B60 and KT400B60:

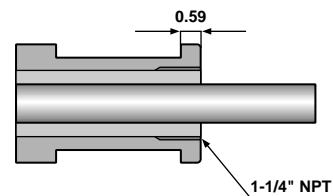
25.59* 27.56* 29.53 31.50 33.46
35.43 37.40 39.38 41.34 43.31 45.28

*This face width is not available in all horsepower.

Bracket AB 60



Optional Cable Type



Note: When Optional Cable Type is selected,
the minimum face width (L) increases by 3.94 inches.