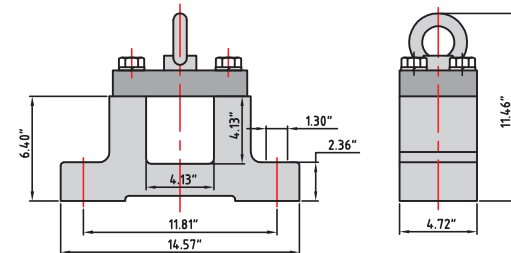


Standard face widths\* (L) in inches:

- 38.0    44.0    50.0    56.0    62.0    68.0    74.0

**Bracket AB 130**



\*Some face widths are not available in all horsepower. For minimum available face widths refer to page 12.

\*\*Idler dimensions are identical to the drum motor with no junction box.

### 200 HP

<b>V (ft/min) M/G</b>	<b>1077 4/S2</b>	<b>914 4/S2</b>	<b>745 4/S2</b>
<b>Belt Pull (lbs)</b>	<b>5715</b>	<b>6736</b>	<b>8786</b>
<b>Drum RPM</b>	<b>131</b>	<b>111</b>	<b>90</b>

### 180 HP

<b>V (ft/min) M/G</b>	<b>1077 4/S2</b>	<b>914 4/S2</b>	<b>745 4/S2</b>
<b>Belt Pull (lbs)</b>	<b>5144</b>	<b>6063</b>	<b>7908</b>
<b>Drum RPM</b>	<b>131</b>	<b>111</b>	<b>90</b>

### 150 HP

<b>V (ft/min) M/G</b>	<b>1077 4/S2</b>	<b>914 4/S2</b>	<b>745 4/S2</b>
<b>Belt Pull (lbs)</b>	<b>4287</b>	<b>5053</b>	<b>6590</b>
<b>Drum RPM</b>	<b>131</b>	<b>111</b>	<b>90</b>

### 120 HP

<b>V (ft/min) M/G</b>	<b>1091 6/S2</b>	<b>917 6/S2</b>	<b>703 6/S2</b>	<b>597 6/S2</b>	<b>458 6/S2</b>
<b>Belt Pull (lbs)</b>	<b>3462</b>	<b>4117</b>	<b>5369</b>	<b>6328</b>	<b>8253</b>
<b>Drum RPM</b>	<b>132</b>	<b>111</b>	<b>85</b>	<b>72</b>	<b>56</b>

### 100 HP

<b>V (ft/min) M/G</b>	<b>1091 6/S2</b>	<b>917 6/S2</b>	<b>703 6/S2</b>	<b>597 6/S2</b>	<b>458 6/S2</b>
<b>Belt Pull (lbs)</b>	<b>2885</b>	<b>3430</b>	<b>4474</b>	<b>5273</b>	<b>6878</b>
<b>Drum RPM</b>	<b>132</b>	<b>111</b>	<b>85</b>	<b>72</b>	<b>56</b>

### 75 HP

<b>V (ft/min) M/G</b>	<b>1091 6/S2</b>	<b>917 6/S2</b>	<b>703 6/S2</b>	<b>597 6/S2</b>	<b>458 6/S2</b>
<b>Belt Pull (lbs)</b>	<b>2116</b>	<b>2516</b>	<b>3281</b>	<b>3867</b>	<b>5044</b>
<b>Drum RPM</b>	<b>132</b>	<b>111</b>	<b>85</b>	<b>72</b>	<b>56</b>

**V = Belt Speed (ft/min)**

**M/G = Motor/Gear Reducer Configuration (at rated horsepower)**

High Speed  
Low Torque



Low Speed  
High Torque